

4. OAK TREE LANE - Glasdon Gateway
Features on both sides.



6. MIDDLETOWN LANE - Glasdon Gateway
Features on one side only.



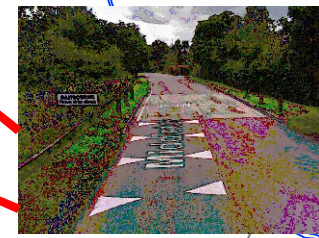
7. MIDDLETOWN LANE - Terminal signs to remain on both sides (not enough space in verge). Bollards @ alternate heights on approach.



3. SAMBOURNE LANE - Terminal signs to remain on both sides (not enough space in verge).



5. MIDDLETOWN LANE - Existing Sambourne sign to be removed with everything to remain. Gateway Sign moved further down to 30 repeaters with Glasdon gateway on both sides.



Road widths & verge widths :-

WIKE LANE

- 1. Road width = Narrow
verge width on both sides = Plenty of space to fit Glasdon gateway signs.

WHITEMOOR LANE

- 2. Road width = 5.2m wide.
verge width coming into village = 3.2m.
verge width coming out of village = 1.4m.

SAMBOURNE LANE

- 3. Road width = 4.7m wide.
verge widths = Too narrow to have Glasdon gateway features.

OAK TREE LANE

- 4. Road width = 5.6m wide
verge width coming into village = 3.6m.
verge width coming out of village = 4.3m.

MIDDLETOWN LANE

- 5. Road width = 6.4m wide.
verge widths on both sides = Plenty of space to fit Glasdon gateway signs.

MIDDLETOWN LANE

- 6. Road width = 6.2m wide.
verge widths coming into village = 1.3m.
verge widths coming out of village = 2m.

MIDDLETOWN LANE

- 7. Road width = 5.6m wide.
verge widths = Too narrow to have Glasdon gateway features.

2. WHITEMOOR LANE - Glasdon Gateway
Features on both sides.



1. WIKE LANE - Glasdon Gateway Features on both sides.



H:\Traffic\AA_PROJECT SUPPORT\Sambourne\Sambourne Gateways\TR11080 Sambourne Gateway Signs - Site Location Plan.dwg

Warwickshire County Council
TRANSPORT AND ECONOMY

Traffic & Road Safety
Communities,
Shire Hall Post Room
Warwick, CV34 4SP
Tel: 01926 410410

www.warwickshire.gov.uk
<mailto:communities@warwickshire.gov.uk>

NOTES

Based on Ordnance Survey mapping with the permission of the Controller of HMSO
© Crown Copyright and database right 2018. Ordnance Survey 100019520.
All rights reserved.
Unauthorised reproduction infringes copyright and may lead to prosecution or civil proceedings.
Warwickshire County Council.

REV	DATE	BY	CHK	AMENDMENT
A	28/01/19	PAS	GP	Post RSAF
B	11/03/19	PAS	GP	Text amm. and arrow added
-	--/--	-	-	-
-	--/--	-	-	-
-	--/--	-	-	-

Drawing title	Drawn by	Checked by
Sambourne Village Gateway Signs SITE LOCATION PLAN WARWICKSHIRE	CR	GS
	Date	May 2020
	Scale	NTS @ A3
Project title	Drawing number	
DELEGATED BUDGETS	TR11080-01	